

GRAHAM⁴
TERRA+FAUPEL+FAUPEL



PINE GLADES

JACKSON HOLE, WYOMING

“There is no other place in Jackson Hole where you can live on the border of the national forest, and be only seven blocks from the Town Square.”

EXCEPTIONAL LOCATION

Stunning Teton views on the horizon with the lights of town at your feet.

Whether you're looking for a quiet day of hiking in the adjacent national forest, or a day of culture at the local galleries or restaurants, the unique location of Pine Glades offers adventure right outside your door.



GRAHAM⁴
TERRA+FAUPEL+FAUPEL

307.690.0812 • 888.301.2402



Pine Glade's combination of location, convenience, quality, ease of access and amenities represent an unprecedented value in Jackson Hole.

The Pine Glades mountain setting is beautiful and private, nestled in a mature conifer forest on Snow King Mountain with stunning Teton and valley views. Bridger-Teton National Forest and Snow King Resort trails lace the mountain adjacent to the property. Snow King offers some of the valley's best skiing, mountain biking and hiking trails. There is over a mile of trails on site and approximately five acres of ski terrain with ski-in ski-out access. For the other side of the Jackson Hole lifestyle; the town of Jackson, with its charming western character and sophisticated arts scene, is an easy 7 block walk or bike ride from Pine Glades.



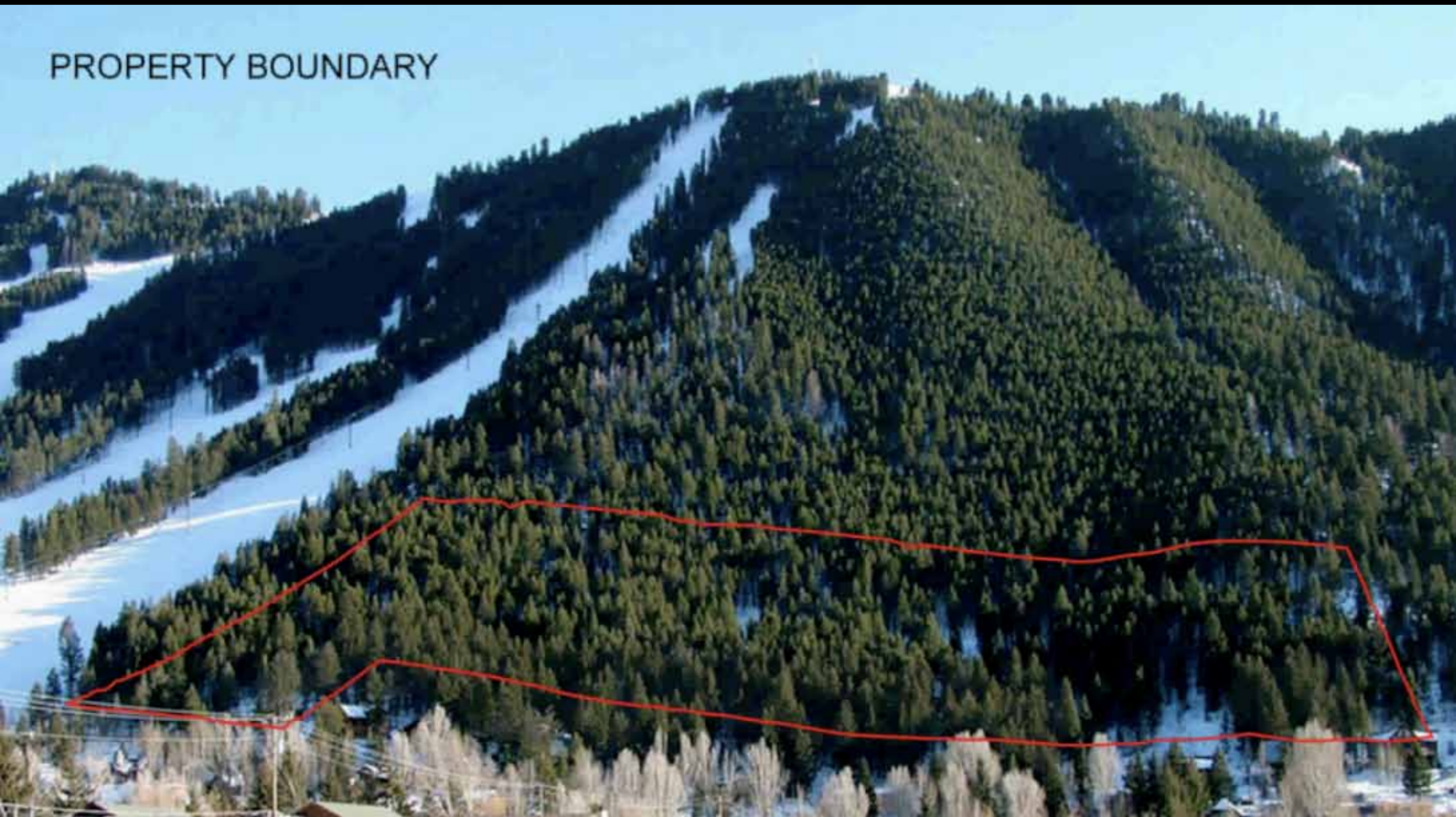
Town Square

Pine Glades

Snow King Resort

National Forest

PROPERTY BOUNDARY





“LEED is not an afterthought. It begins with site planning and is painstakingly designed and built into every system, every aspect of the project.”

ENVIRONMENTAL STEWARDSHIP

Pine Glades is the first residential development in Wyoming to receive US Green Building Council’s Leadership in Energy and Environmental Design for Homes (LEED-H) certification.

The LEED Green Building rating system is the nationally accepted benchmark for the design, construction and operation of high performance and efficient green buildings.

LEED promotes a whole-building approach to sustainability by recognizing performance in five key areas of human and environmental health: sustainable site development, water savings, energy efficiency, materials selection and indoor environmental quality.





Pine Glades townhomes have been built to maximize energy efficiency.

- **Energy consumption will predictably be as much as 40% lower** than the typical single family home, significantly reducing heating and water bills.
- Low-E insulated windows block the sun's ultraviolet rays and infrared heat, keeping the **townhome cooler in the summer and warmer in the winter.**
- Radiant in-floor heat reduces direct heat loss and minimizes energy use.
- For maximum energy efficiency, the roadway and sidewalk snow melt system is activated by sensors which monitor temperature and moisture conditions.
- Eco-friendly interior design and appliance packages are available.
- Through the standards of a LEED certified project, the results are measurable.

Low impact on the environment

- **The townhomes have been clustered within 5 acres, leaving 12 acres of open space.**
- Buildings and parking have been designed to minimize the development's footprint.
- The project has been so thoughtfully sited and designed that over **80% of the 3,000 conifer trees on the property will be preserved.**
- The exterior siding is constructed from dead standing pine logs, not freshly cut live trees.





“Our goal from the beginning was to construct these townhomes to the same standard as the finest homes in Jackson Hole...and also minimize the cost and effort to maintain a truly luxury property.”

EXCEPTIONAL QUALITY

World-class construction with the finest finishes available.

Through the vision of project developer, Jeff Hussey, the character and quality of the Pine Glades community was brought to life. Pine Glades townhomes have been designed and built with the highest quality, utmost attention to detail and maximum sensitivity to the natural setting found anywhere in the valley. Hardwood floors, granite counters, surround showers and custom cabinetry with integrated appliances are just a few of the touches that contribute to the refined elegance that is Pine Glades.





THE PROJECT

Jackson Hole's most luxurious townhomes

The Pine Glades development consists of twenty seven 3 bedroom, 3.5 bath townhomes.

Site

17 forested acres on Snow King Mountain adjacent to National Forest and the Snow King Ski Resort. The townhomes are sited on 5 acres. 12 acres will remain as open space.

Features

- 2,700-2,800 square feet of living space on 3 levels
- Comfortable, contemporary western design
- Open floor plan with spacious great room, kitchen and dining areas, expansive windows, and floor to ceiling stone fireplaces
- Private 2 car garage, 675 square feet
- Extensive decks, covered porches and patio spaces
- Rough sawn cedar lap siding with Oklahoma Farmer's stone pillars, accents and fireplaces
- Floors: reclaimed fir, hickory or cherry in main living spaces; carpet in bedrooms
- Vaulted ceilings cover 40% of the interior space
- Handmade alder doors and trim
- Top of the line Low-E wood clad windows
- High end Kohler and Grohe plumbing fixtures
- Professional grade appliances



LUXURY TOWNHOMES

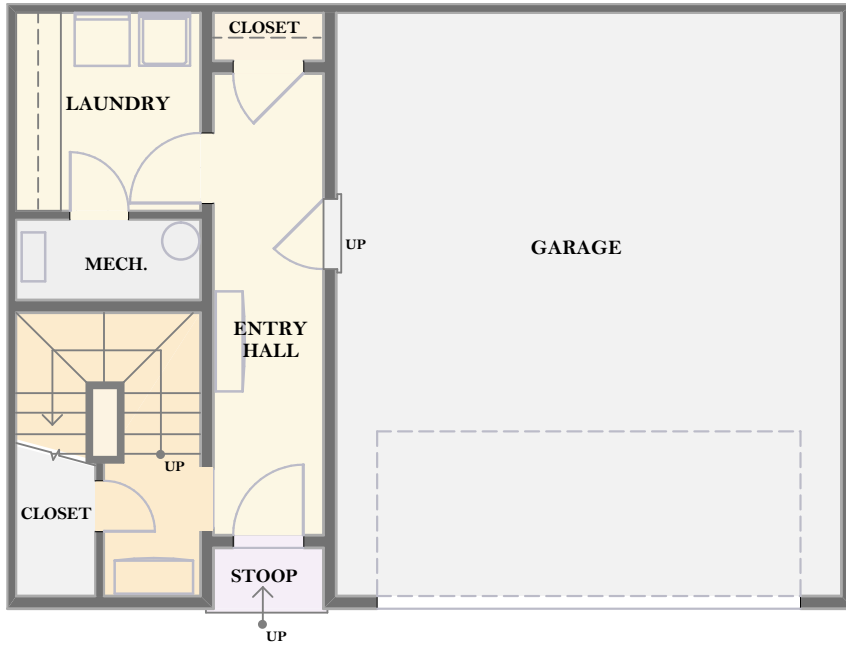
The use of natural materials inside and out compliments the exquisite mountainside setting and creates the warm and inviting character of a mountain lodge. The spacious and appealing great room, which is the centerpiece of each townhome, captures wonderful Teton and Jackson Hole views through expansive windows. The open floor plan of the main level features comfortable sitting and dining areas, a professional grade kitchen, hardwood floors, cathedral ceilings with a balcony above, and floor to ceiling stone fireplace. This level includes two guest bedroom suites. On the upper level is the luxurious master suite with a spacious sitting area, beautifully appointed master bath and a private deck. The lower, entry level accesses the two car garage, mud room, laundry and mechanical room.





END UNIT

Ground & Main Levels



GROUND LEVEL

LIVING AREA
359 sq ft

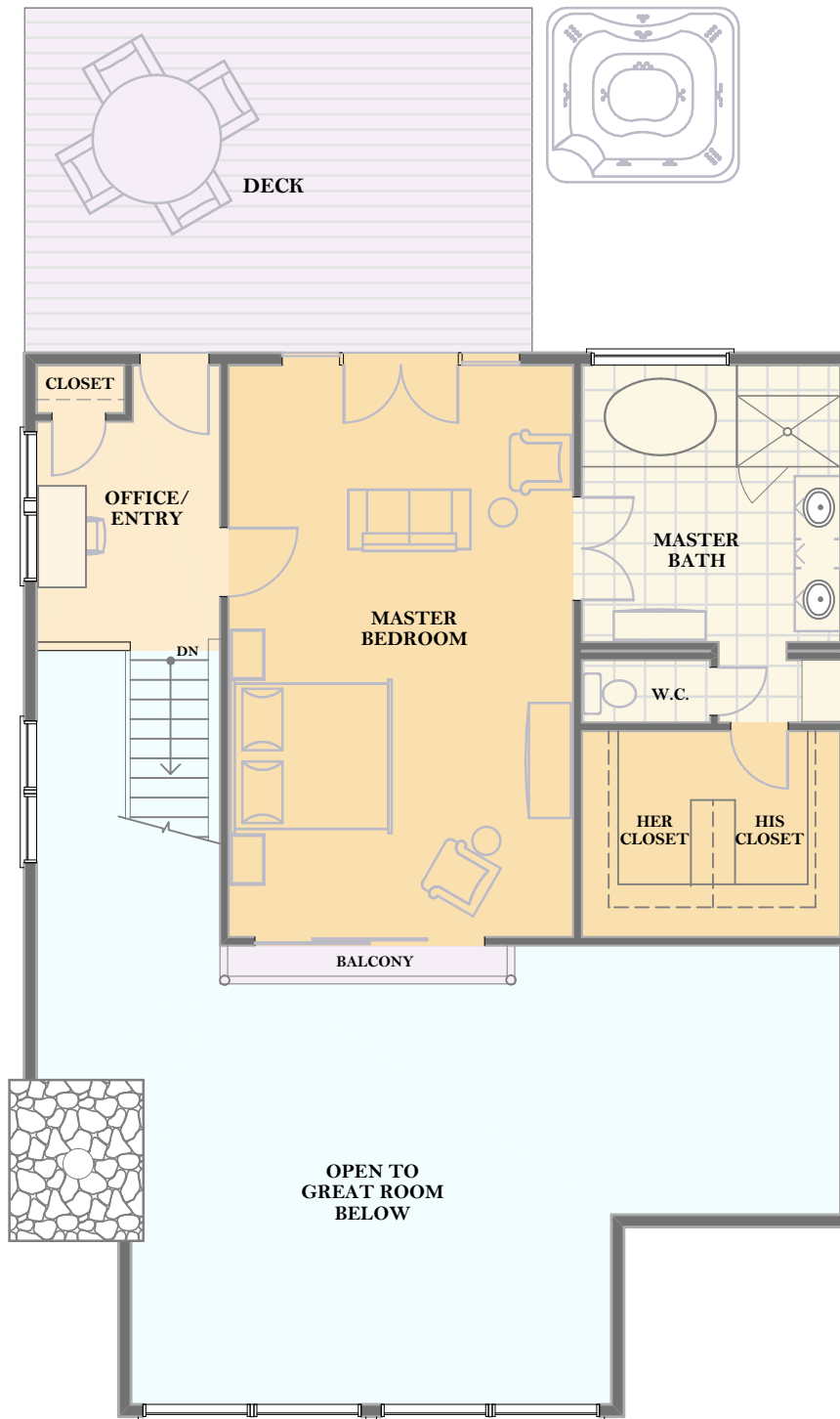


MAIN LEVEL

LIVING AREA
1,495 sq ft

END UNIT

Upper Level

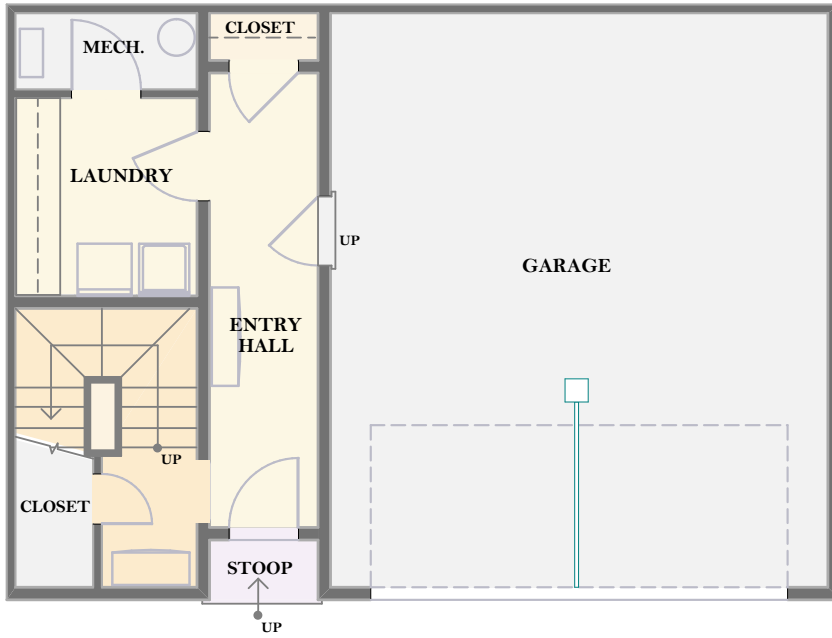


UPPER LEVEL

LIVING AREA
832 sq ft

MIDDLE UNIT

Ground & Main Levels



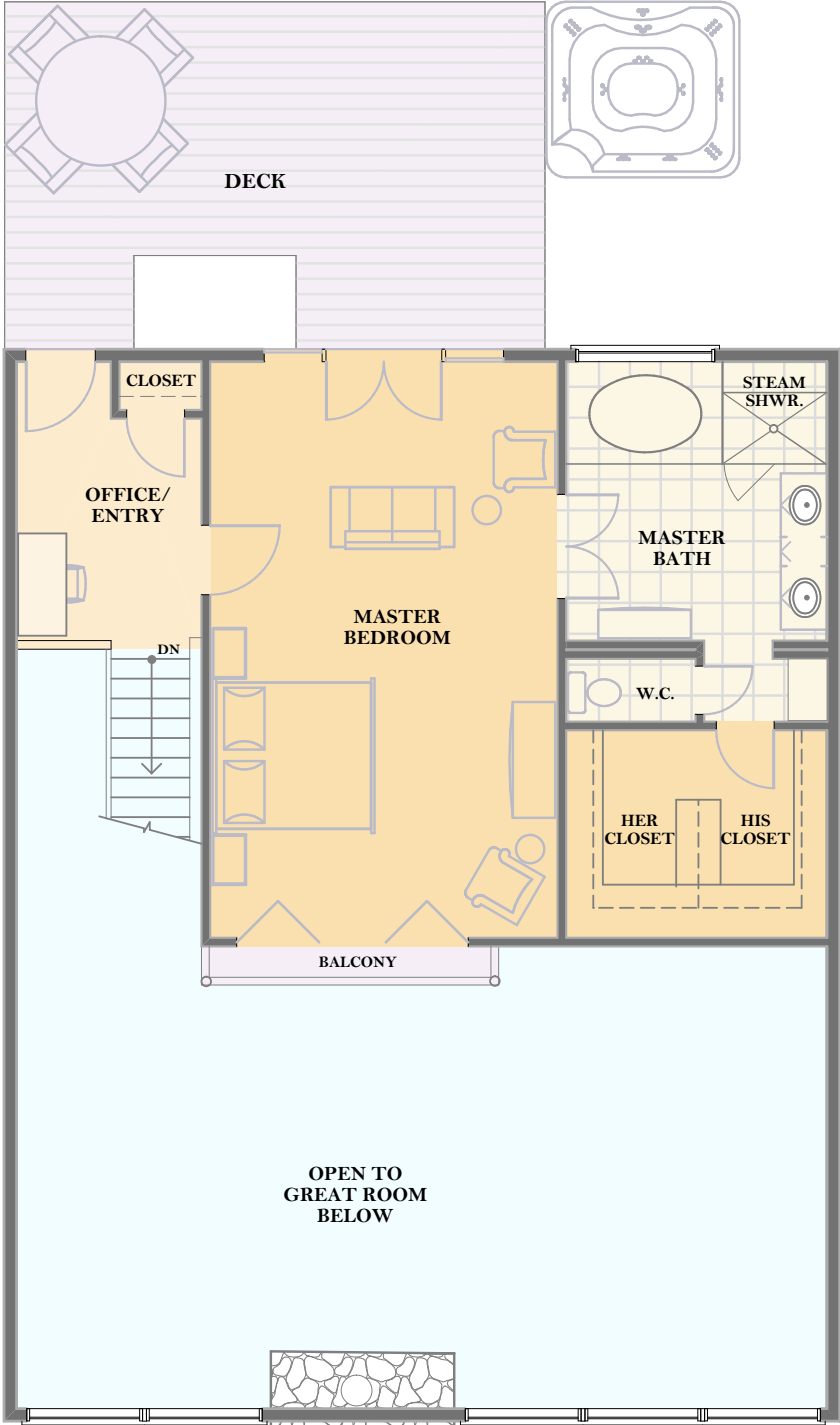
GROUND LEVEL
LIVING AREA
359 sq ft



MAIN LEVEL
LIVING AREA
1,606 sq ft

MIDDLE UNIT

Upper Level



UPPER LEVEL
LIVING AREA
832 sq ft



For More Information Contact:

GRAHAM4
TERRA+FAUPEL+FAUPEL



Bob Graham
Owner, Associate Broker



Karen Terra
Owner, Associate Broker



Matt Faupel
Owner, Associate Broker



Julie Faupel
Owner, Associate Broker

Bob Graham & Karen Terra
Matt Faupel & Julie Faupel
307.690.0812 • 888.301.2402

graham4@jhreassociates.com
www.graham4jh.com

110 E. Broadway, Jackson, WY 83001

JACKSON HOLE
REAL ESTATE

— ASSOCIATES —

Exclusive Affiliate of

CHRISTIE'S GREAT ESTATES

